

Procure



**Powered By Choice,
Driven By You.**

Better meetings with IAdea signboard



XDS-1078 Smart Signboard



PoE



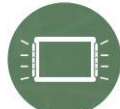
Touch



Zero Gap



Tempered Glass



Light Bar



Usage *
Analysis



Room *
Check-in



Multiple *
Calendars



Central *
Administration



Protected *
Reservations

* Features provided by IAdea certified software partners.



◀ Room status light bar

Convenience at its best! Green, Amber or Red? The light bar shows room availabilities even when users are still down the hall from a distance.



▲ 1-wire installation

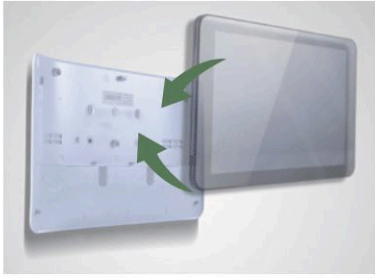
Anyone can easily install the device with only one cable in-hand, thanks to the PoE function, which transmits both power and information.



▲ Touch and book

Why wait? IAdea Smart Signboard enables immediate booking, in addition to browsing of today's meetings, with the user-friendly touch function.

Product Photos



Flush mount

Flush mount + VESA mount

Unlike most typical signboards, XDS-1078 is flush mounted and much closer to the wall to deliver a much more visually pleasing and user intuitive industrial design of the system. IAdea provides step by step mounting guide, as easy as 1, 2, 3.



VESA mount

Technical Specification

Open Standards Supported

- HTML5, JavaScript, and CSS
- Android 4.4 API
- W3C SMIL for cross-platform management
- W3C Widgets for HTML delivery
- POPAI Digital Signage Content Standards, including:
 - S1 (JPEG 480p baseline)
 - S2 (JPEG 720p baseline)
 - S4 (MPEG L2 audio)
 - S5 (MP3 audio, 384Kbps)
 - S6 (MPEG-1 SIF, 3Mbps CBR)
 - S7 (MPEG-1 480p, 10Mbps CBR)
 - S8 (MPEG-1 720p, 15Mbps CBR)
 - S9 (MPEG-2 480p, 6Mbps CBR)
 - S10 (MPEG-2 720p, 12Mbps CBR)
 - S11 (H.264/MPEG-4 AVC, 480p, 6Mbps CBR)
 - S12 (H.264/MPEG-4 AVC, 720p, 10Mbps CBR)
- E1 (PNG 24bpp+alpha, 480p)
- E2 (PNG 24bpp+alpha, 720p)
- E4 (VC-1/WMV9, MP@ML, 720p)
- E7 (MPEG-4 ASP, 480p, 10Mbps CBR)
- E8 (H.264/MPEG-4 AVC, 1080p, 20Mbps CBR)

Advanced Signage Features

- Remote commissioning
- AlwaysOn, AppLock to prevent unauthorized access
- StrongCache for continued playback even when network is not available

HTML5 Support

- Widgets for calendar, clock, news, weather, Twitter, and web page integration
- HTML5 technologies including CSS and Javascript
- WebKit-based browser engine, same as Google Chrome™ and Apple Safari® browsers

Display and Sound

- 10.1" LCD wide aspect ratio
- 10 points multi-touch
- 300 nits maximum brightness
- 1280x800 high resolution
- View Angle: 170 x170
- Built-in stereo speakers 1W x2
- Programmable LED bar x 2
- HDMI output to external display

Content Management

- SignApps Express Utility
- 3rd party solution (optional license)

Connectivity

- Wi-Fi:802.11 b/g/n
- Multi-points touch
- Ethernet 10/100 BASE-T
- Bluetooth 4.0
- 3.5mm analog stereo audio out
- USB 2.0 x 2
- Micro USB for ADB
- Optional 3G/4G mobile module via USB

Local Storage

- 8 GB eMMC memory (approx. 360 minutes of typical 720p video @3 Mbps)
- Micro SD card slot (support up to 32GB storage)

Mounting Kit

- Built-in VESA compatible 75x75(mm) posts

Supplied Accessories

- Table stand
- Adapter
- Power plug
- DC in & Micro SD stopper
- HW & SW QSG

Expansion Options

- 16GB/32GB micro SD/SDHC memory card

AC Adapter

- Input: 100-240V, 50-60 Hz, 0.5A Max.
- Output: 12V, 1.5A
- UL/CB certified power supplies
- Interchangeable connector system includes US plugs (Option for EU, UK and AUS plugs)
- Power-over-Ethernet (PoE) single-wire installation

Environmental

- Operating temperature: 0 to 40°C
- Storage Humidity: 10 to 85% @ 40°C, non-condensing

Dimensions for Product & Package

- Size:
 - 269.88mm(W)x 170.77mm (H)x 28.5 mm (D)
 - 10.62" (W) x 6.72" (H) x 1.12"(D)
- Weight: 727g/1.6 lb
- Individual Package Size:
 - 336mm (W) x 100mm(H) x 227 mm (D)
 - 13.2"(W) x 3.93"(H) x 8.93 (D)
- Outer Carton Size:
 - 695mm (W) x 260mm (H) x 530 mm(D)
 - 27.36"(W) x 10.23"(H) x 20.86"(D)
- Units per Outer Carton: 10

Certifications

- CE/FCC

Warranty

- 1-year limited parts & labor