

Procure



**Powered By Choice,
Driven By You.**



VPL-S500 Series

Ultra Short Throw Projectors

(VPL-SW535C photo shown)

VPL-SW535C VPL-SW535
VPL-SW525C VPL-SW525
VPL-SX535



BrightEra™

HDMI

Utilize Interactive Function to Deliver Powerful Presentations with an Ultra Short Throw Projector

Sony's VPL-S500 Series data projectors are ideal for education, training, corporate applications, and a range of other commercial uses. The VPL-S500 Series projectors achieve large-screen projection from very short distances thanks to an ultra-powerful short throw lens. The VPL-SW535 and VPL-SW525 offer WXGA projection with powerful 3000 lumens*¹ and 2500 lumens*¹ respectively, and the VPL-SX535 offers XGA 3000 lumens*¹. Auto lamp dimming, max 6,000h expected lamp replacement timing, vertical 4% / horizontal 2% optical lens shift (V : 4% / H : 3% for VPL-SX535) and supplied wall mount bracket helps reduce total cost of ownership. Packed with advanced projector technologies into a stylish design, the VPL-S500 Series projectors are an excellent choice.

Create Interactive Collaboration Space with VPL-SW535C and VPL-SW525C

For the needs to create interactive teaching or collaboration space, the VPL-SW535C and VPL-SW525C offer built-in interactivity in addition to powerful VPL-S500 series features. The two projectors transform most of a flat surface into an interactive screen, eliminating the need to install expensive interactive whiteboards. Rich interactive capabilities include simultaneous dual-touch annotation, mouse function to operate many third party curriculum software products*², and useful tools to enhance interactive training and presentation. Both models offer WXGA projection with the VPL-SW535C having 3000 lumens*¹ light output, and 2500 lumens*¹ with the VPL-SW525C.

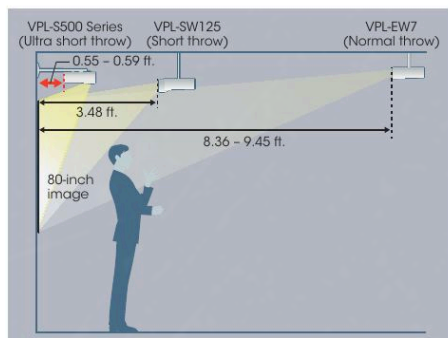
*¹ ISO21118.

*² Sony does not test all 3rd party software available in the market. Sony is not responsible for non-compatibility of any 3rd party software.

FEATURES

Ultra-short Projection Distance

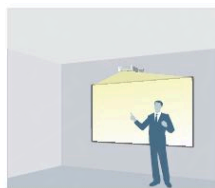
The VPL-S500 Series projectors come equipped with an ultra-short focal length lens, which makes it possible to project images from a very short distance.



A short projection distance has two key benefits. The presenter will not be distracted by the projected image, and it's easier for the audience to see the projected image because screen shadow is minimized.



With conventional models
(Normal throw)



With the VPL-S500 Series
(Ultra short throw)

Cost-efficient, Energy-efficient Design

Long-lasting Lamp

By incorporating a high-performance lamp and advanced lamp-control technology, the VPL-S500 Series projectors deliver an extremely long lamp replacement time of up to 6,000 hours.*

* Approximate recommended period, in low mode.

Lamp and Filter Synchronized Maintenance

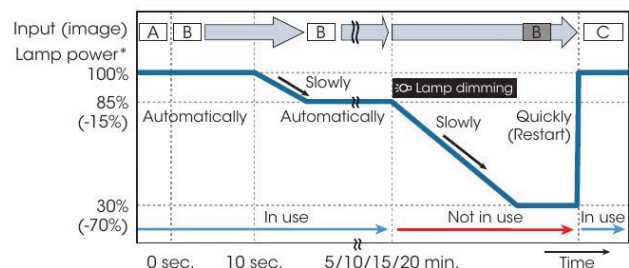
The expected lamp maintenance interval time for each model can reach up to 6,000 hours depending on the selected lamp mode, and dust filters require the same maintenance interval. Synchronizing the timing of lamp and filter maintenance enables users to reduce the numbers of "ladder climbs" for maintenance.

Low Power Consumption

The VPL-S500 Series projectors offer remarkably low power consumption, helping users to save on their electricity expenses.

Lamp Dimming Function

The VPL-S500 Series projectors are equipped with a lamp dimming function. After 10 seconds of a static signal feed, the lamp dims by approximately 15% which is minimally noticeable. If one of these projectors is left powered on while not in use, after a set period of time it will automatically detect no change of signal input and will dim the lamp to as low as approximate 30% of original brightness to reduce energy consumption.



* Lamp high mode, VPL-SX535. The values are approximate.

Superb Picture Quality

Brilliant Color Performance

The VPL-S500 Series projectors adopt a 3LCD projection system incorporating three LCD panels. This system enables each projector to present bright and natural images.

By combining an advanced generation of inorganic LCD panels that utilize Sony's BrightEra™ technology with a 3LCD projection system, the VPL-S500 Series projectors offer high picture quality and brightness.

12-bit 3D Gamma Correction

The VPL-S500 Series projectors incorporate 12-bit 3D gamma correction circuitry to perform highly accurate gamma correction, achieving smoother gradations and a richer gray scale.



VPL-SW535C

Main Pen



Sub Pen



Built-in Dual Touch Interactivity for VPL-SW535C and VPL-SW525C

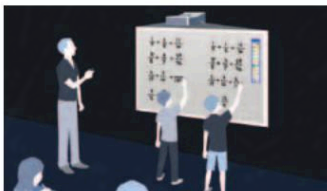
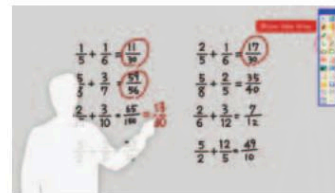
Interactivity

The VPL-SW535C and VPL-SW525C offer simultaneous dual-touch interactive annotation on the projection screen with the use of supplied pen devices and drawing software. The interactive pens work as computer mouse or screen annotation device. In a classroom environment, they allow users to easily incorporate many third party curriculum software products to launch interactive lessons. In a corporate environment, instant communication space can be established using virtual whiteboard mode.



Mouse Function

The interactive pen works as a computer mouse. This allows customers to operate third party software products.



Drawing / Dual Pen Mode

Enables up to two people to simultaneously annotate on the screen in virtual whiteboard mode. Convenient tool for conducting lessons or training.

Whiteboard Mode

This allows customers to annotate on the virtual whiteboard, and to import graphics and PowerPoint files as background for instant collaboration, or to use spot light tools and pen stroke recording tools for enhanced communication.

Useful Tools

These tools make the interactive training and presentation even more effective!

Replay Mode



Spotlight Mode



Interactive Pens

The VPL-SW535C and VPL-SW525C are provided with two interactive pens : main pen with full functionality (for teachers and meeting owners) and sub pen with limited functionality (for students and participants). They have an ergonomic design to fit comfortably in the users' hands. Each pen runs with 2x AAA dry cell batteries. When replacement pens are required, IFU-PN100M (main pen) and IFU-PN100S (sub pen) are available for purchase.

IFU-PN100M (main pen, with blue ring)



IFU-PN100S (sub pen, with gray ring)



VPL-SW535C, VPL-SW525C Software Requirements		
	Windows®	Macintosh®
OS	Windows XP SP2 or later (Home / Professional Edition) *2 Windows Vista non-SP or later (Home Basic / Home Premium / Business / Ultimate / Enterprise) *2 Windows 7 (Home Basic / Home / Premium / Professional / Ultimate / Enterprise) *3	Mac OS X 10.3.7 or later Mac OS X 10.4.x Mac OS X 10.5.x Mac OS X 10.6.x
CPU	Pentium III 1.0GHz or faster	Power PC G4 1.25GHz or faster Recommended: Intel Core Duo 1.6GHz or faster
Amount of memory	512MB or more	256MB or more
Hard Disk Free Space	100MB or more	
Display	Resolution greater than SVGA (800x600)	

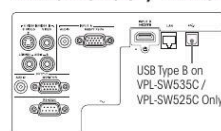
*2 : Only 32 bit edition

*3 : 32 bit edition and 64 bit edition

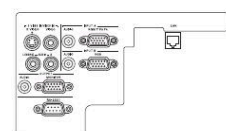
*4 : Macintosh-compatible interactive software is planned to be available during August 2012 through Sony Electronics Service Plus website <https://www.servicesplus.sel.sony.com/> (the Macintosh-compatible software will not be shipped with the projector)

CONNECTOR PANELS

VPL-SW535C / VPL-SW535
VPL-SW525C / VPL-SW525

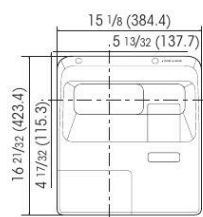


VPL-SX535

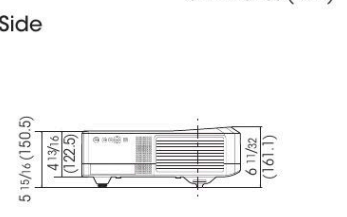


DIMENSIONS

Top



Side



Unit: inches (mm)

SPECIFICATIONS

		VPL-SW535C	VPL-SW535	VPL-SW525C	VPL-SW525	VPL-SX535
Display system		3 LCD system				
Display device	Size of effective display area	0.75" (19 mm) x 3, BrightEra, Aspect ratio: 16:10				0.63" (16 mm) x 3, BrightEra, Aspect ratio: 4:3
	Number of pixels	3,072,000 (1280 x 800 x 3) pixels				2,359,296 (1024 x 768 x 3) pixels
Projection lens	Zoom	Optical: Manual (Approx. x 1.05), Digital: x4				
	Focus	Manual				
	Lens shift	Manual, Vertical: +/- 4%, Horizontal: +/- 2%				Manual, Vertical: +/- 4%, Horizontal: +/- 3%
	Throw ratio	0.27:1 to 0.29:1				0.34:1 to 0.36:1
Light source		High-pressure mercury lamp 210 W type				
Recommended lamp replacement time*1		3000 H / 4500 H / 6000 H (Lamp mode: High / Standard / Low)				
Filter cleaning cycle*1		Max. 6000 H, Same time as the lamp replacement is recommended				
Screen size		70" to 130" (1.78 m to 3.30 m)				60" to 110" (1.52 m to 2.79 m)
Light output (Lamp mode: High / Standard / Low)		3000 lm / 2400 lm / 2000 lm		2500 lm / 2100 lm / 1800 lm		3000 lm / 2400 lm / 2000 lm
Color light output (Lamp mode: High / Standard / Low)		3000 lm / 2400 lm / 2000 lm		2500 lm / 2100 lm / 1800 lm		3000 lm / 2400 lm / 2000 lm
Contrast ratio (full white / full black)*2		2500:1				
Displayable scanning frequency	Horizontal	14 kHz to 93 kHz				
	Vertical	47 Hz to 93 Hz				
Display resolution	Computer signal input	Maximum display resolution: UXGA 1600 x 1200 dots*3				
		Panel display resolution: 1280 x 800 dots				Panel display resolution: 1024 x 768 dots
	Video signal input	NTSC, PAL, SECAM, 480/60i, 576/50i, 480/60p, 576/50p, 720/60p, 720/50p, 1080/60i, 1080/50i, 1080/60p, 1080/50p				
Color system		NTSC3.58, PAL, SECAM, NTSC4.43, PAL-M, PAL-N				
Keystone correction		Max. Vertical: +/- 5 degrees				
OSD language		20-languages (English, Dutch, French, Italian, German, Spanish, Portuguese, Turkish, Polish, Russian, Swedish, Norwegian, Japanese, Simplified Chinese, Traditional Chinese, Korean, Thai, Vietnamese, Arabic, Farsi)				
Computer and video signal input/output	INPUT A	RGB / Y Pb Pr input connector: Mini D-sub 15-pin (female), Audio input connector: Stereo mini jack				
	INPUT B	HDMI input connector: HDMI 19-pin, HDCP support Audio input connector: HDMI audio support				RGB input connector: Mini D-sub 15-pin (female) Audio input connector: Stereo mini jack
	S VIDEO IN	S video input connector: Mini DIN 4-pin, Audio input connector: Pin jack (x2) (shared with VIDEO IN)				
	VIDEO IN	Video input connector: Pin jack, Audio input connector: Pin jack (x2) (shared with S VIDEO IN)				
	OUTPUT	Monitor output connector*4: Mini D-sub 15-pin (female), Audio output connector*5: Stereo mini jack (variable out)				
Control signal input/output		RS-232C connector: D-sub 9-pin (male), LAN connector: RJ-45, 10BASE-T/100BASE-TX, Other: USB Type B for interactive module	RS-232C connector: D-sub 9-pin (male), LAN connector: RJ-45, 10BASE-T/100BASE-TX	RS-232C connector: D-sub 9-pin (male), LAN connector: RJ-45, 10BASE-T/100BASE-TX, Other: USB Type B for interactive module	RS-232C connector: D-sub 9-pin (male), LAN connector: RJ-45, 10BASE-T/100BASE-TX	RS-232C connector: D-sub 9-pin (male), LAN connector: RJ-45, 10BASE-T/100BASE-TX
Speaker		10 W x 1 (monaural)	1 W x 1 (monaural)	10 W x 1 (monaural)		1 W x 1 (monaural)
Operating temperature (Operating humidity)		32°F to 104°F / 0°C to 40°C (35% to 85%; no condensation)				
Storage temperature (Storage humidity)		-4°F to +140°F / -20°C to +60°C (10% to 90%)				
Power requirements		AC 100 to 240 V, 3.5 A to 1.2 A, 50 Hz / 60 Hz	AC 100 V to 240 V, 3.3 A to 1.2 A, 50 Hz / 60 Hz	AC 100 to 240 V, 3.5 A to 1.2 A, 50 Hz / 60 Hz		AC 100 V to 240 V, 3.6 A to 1.4 A, 50 Hz / 60 Hz
Power consumption (Lamp mode: High / Standard / Low)	AC 100 V to 120 V	290 W / 260 W / 230 W	290 W / 250 W / 214 W	290 W / 260 W / 230 W		310 W / 250 W / 213 W
	AC 220 V to 240 V	280 W / 250 W / 220 W	280 W / 242 W / 210 W	280 W / 250 W / 220 W		300 W / 242 W / 206 W
Standby mode power consumption (Standby mode: Standard / Low)	AC 100 V to 120 V	7.5 W / 0.2 W	8 W / 0.3 W	7.5 W / 0.2 W		8 W / 0.3 W
	AC 220 V to 240 V	7.5 W / 0.3 W	8 W / 0.3 W	7.5 W / 0.3 W		8 W / 0.3 W
Heat dissipation	AC 100 V to 120 V	989 BTU				1057 BTU
	AC 220 V to 240 V	955 BTU				1023 BTU
Outside dimensions		W 15 1/8 x H 4 13/16 x D 16 21/32 inches (W 384.4 x H 122.5 x D 423.4 mm) (without protrusion)				
Mass (without wall mount)		15 lb 10 oz / 7.1 kg	15 lb 7 oz / 7.0 kg	15 lb 10 oz / 7.1 kg	15 lb 7 oz / 7.0 kg	
Supplied accessories		RM-PJ7 Remote Commander (1), Lithium battery: CR2025 (1), Wall mount (1), AC Power Cord (1), Operating Instructions (CD-ROM) (1), Quick Reference Manual (1), Wall Mount Manual (1), Mini D-sub 15-pin cable (1) (VPL-SW535 / SX535 Only), Interactive pen device (2) (VPL-SW535C / SW525C Only), USB cable (5M) (1) (VPL-SW535C / SW525C Only)				
Replacement lamp		LMP-E212				
Replacement Interactive pen device		IFU-PN100M, IFU-PN100S	—	IFU-PN100M, IFU-PN100S	—	

*1 Expected maintenance time not guaranteed. Lamp and filter performance will vary based on operating environment and use. *2 This value is average.

*3 Available for the VESA Reduced Blanking signal. *4 Not available in standby. From INPUT A and INPUT B (INPUT B is available only for the VPL-SX535).

*5 Works as an audio switcher function. Output from a selected channel; not available in standby.