

newline

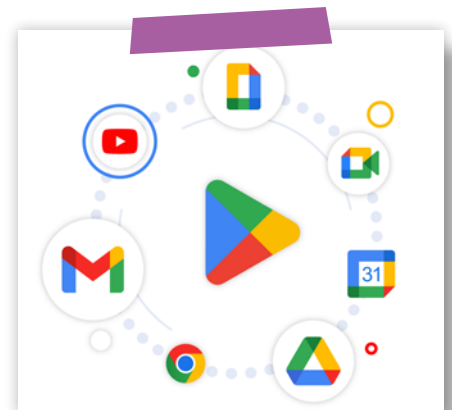
All Stars

Elara is the eighth largest moon of Jupiter. And with a size of only 2% of Europe, the smallest of the four Galilean moons.



POWER UP YOUR COLLABORATIVE WORKSPACE

Elara Pro, a **Google EDLA** certified powerhouse, seamlessly integrated with Google Apps. This flexible solution ensures a superior user experience in any workspace. High-precision writing, immersive sound with a subwoofer, NFC-enabled login and hybrid UC redefine collaboration. Reinvent your workspace, setting a new standard in corporate excellence with Elara Pro.



MODULAR SYSTEM

Elevate your experience with our universe of solutions. Customise your display with Newlines' accessories. Mix and match to create the perfect fit.



NEWLINE INTERACTIVE ECOSYSTEM

The Newline Interactive Ecosystem enhances productivity with versatile tools that seamlessly integrate with any software or device, meeting all classroom needs.

WHITEBOARD CAST+ ENGAGE DISPLAY MANAGEMENT PLUS
CLASSROOM TOOLS VISUAL COMMUNICATION SOLUTION

WiFi 6
CERTIFIED

Enhanced
Wi-Fi & Bluetooth



100 W Powered
USB Type-C



Secure Multi
User Profiles



Powerful
Performance



High Quality Sound
incl. Subwoofer



SDM-S
Ready

65"

75"

86"

MODEL

ELARA Pro 65"	TT-6523QCA+
ELARA Pro 75"	TT-7523QCA+
ELARA Pro 86"	TT-8623QCA+

PANEL

Backlight	Direct LED (Wide Color Gamut + Anti Blue Light)
Glass Surface	Anti-Glare+Anti-Fingerprint, + Antimicrobial Tempered Glass
Bonding Technology	Certified Zero Bonding
Display Area	65": 1428 x 803 mm 75": 1650 x 928 mm 86": 1895 x 1066 mm
Display Ratio	16:9
Resolution	3840 x 2160 (4K)
Colours	1,07 Billion
Brightness	450 cd/m ²
Contrast Ratio	5000:1
Response Time	5 ms
Viewing Angle	178°
Display Life Time	≥ 50 000 hours
Transparency	> 88%
Haze	2 % - 5 %
Touch Surface Hardness	7H

POWER CONSUMPTION

	65": 116 W
Standard mode*	75": 124 W
	86": 150 W
Standby Mode*	<0,5 W

TOUCH

Touch Technology	Stellar Touch Technology
Touch Points	50 Windows 20 Android/MAC/Linux
Touch Screen Writing Tools	Passive pen, Finger, Fist
Number of stylus	2
Accuracy	±1 mm
Real Palm Rejection	✓

SPEAKER

Speaker Position	Front Facing
Speaker Rated Impedance	6 Ω
Speaker Freq.Response	250 Hz-20 KHz SPL -10 dB
Output S.P.L.	90±3 dB
Speaker Max.Power Output	20 W x 2

SUBWOOFER

Speaker Position	Rear Side
Speaker Rated Impedance	4 Ω
Speaker Freq.Response	20 Hz-20 KHz SPL -10 dB
Output S.P.L.	77±2 dB
Speaker Max.Power Output	20 W x 1

MICROPHONE

Mic Possition	8 Microphone Array Upper Front
Pick Up Distance	8 m
Mic Performance	Echo cancellation, Beamforming, Noise Reduction

AI CAMERA MODULE

Camera	Included (ModCam+)
Camera Resolution	3840 × 2160/ 30 fps (4K)
Field of View	120° FOV Lenses
Camera Tile Range	15°

FRONT I/O

USB Type-C (Powered 100 W)	1
HDMI IN 2.1 with HDCP 2.2 (4K @60 Hz)	1
USB 3.2 Type-B (Touch)	1
USB 3.2 Type-A	2
Microphone In	1

REAR I/O

HDMI IN 2.1 with HDCP 2.2 (4K @60 Hz)	2
DisplayPort 1.2	1
USB 3.2 Type-B (Touch)	3
USB 3.0 Type-C (Powered 15 W)	1
USB 3.0 Type-C	Out x 1
USB 3.2 Type-A	2
USB 3.2 Type-A Android	1
HDMI OUT 2.0 (4K @60 Hz)	1
RS232	1
RJ45 (Gigabit)	In x 1 / Out x 1
OPS Slot	1
SPDIF	1
Audio Line Out	1
WIFI Module Slot	1
SDM-S Slot	1
Power Out Connect (180 W)	1
NFC	1

SMART SYSTEM

SoC Chipset	Rockchip RK3588 octa-core processor, 4x Cortex-A76 at 2.4GHz, 4x Cortex-A55 cores at 1.8 GHz
GPU	Mali Odin G610 MC4
NPU	6 Tops
RAM	16 GB (DDR4)
Total Storage	320 GB (Expandable)
Operating System	Android 13 Certified
Google EDLA	✓
Formats Support For Image	JPG, JPEG, BMP, PNG MPEG1, MPEG2, MPEG4, SorensonH.263, H.263, H.264, MVC, AVS, AVS+, WMV3, VC1, Motion JPEG, VP8, VP9, RV30/ RV40
Formats Support For Video	MPEG1/2 @LAYER1; @LAYER2; @LAYER3, EAC3, ACC-LC, HEAAC, VORBIS, LPCM, IMA-ADPCM, MS-ADPCM, G711 A/ MU-LAW, LBR (COOK), FLAC
Formats Support For Audio	
Wi-Fi 6 + Bluetooth 5.2 Module	Integrated (Replaceable)

EXTRA FIRMWARE FEATURES

Multiuser profile	✓
Embedded Google Apps	✓

DIMENSIONS / WEIGHT

Outline Dimensions*	65": 1513 x 927 x 118 mm 75": 1735 x 1051 x 119 mm 86": 1982 x 1191 x 119 mm
Net Weight*	65": 39 Kg 75": 52 Kg 86": 65 Kg
VESA*	65": 600 x 400 mm 75": 800 x 400 mm 86": 800 x 400 mm

* The provided measures are indicative and subject to further adjustments. They are not yet considered definitive.