

# Procure



**Powered By Choice,  
Driven By You.**

## HN75WR80U

### 75" ADVANCED INTERACTIVE DISPLAY

Hisense Interactive Digital Display's deliver unrivalled performance and value. They combine the power of a digital display, tablet, electronic whiteboard and video conference device to deliver the ultimate all-in-one display solution. Interactive Digital Boards (65"/75"/86") have been designed to facilitate market leading knowledge sharing in both business and educational environments. They are touch enabled and have multiple users them at once to present, illustrate and share information.



#### Highlights



##### Smooth Touch

The built-in whiteboard app allows users to smoothly write, draw and erase information on-screen through touch, either by hand or with a stylus pen.



##### Accurate as analog

The IR software precisely recognizes touch points as little as 2 mm making it as accurate as the experience of writing with pen and paper.



##### Collaborative interaction

The touchscreen recognises up to 20 touches at once which is ideal for simultaneous use by meeting participants.



##### Intuitive controls

With your fingers you will, among other things, be able to switch between tasks, annotate content from any source, make handwritten notes, zoom in / out and undo changes.



##### Smooth and speedy processing

The open Android 8.0 platform not only guarantees smooth processing, but also supports the installation of Android-based application.



##### Powerful Architecture

Expect unstoppable performance by an octa-core processor and 3+32GB large memory.



##### Comfortable viewing

Each of our Interactive Digital Boards has a filter to effectively reduce blue light so your eyes remain comfortable even when using the screen for longer periods of time.



##### Immersive Sound

Thanks to embedded dual-channel Dolby sound the Hisense WR series will give their users and audiences a cinematic audio-visual experience.



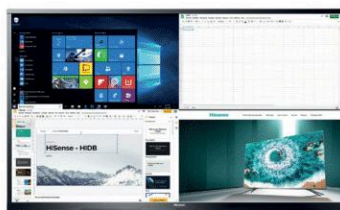
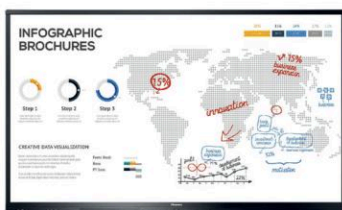
##### Tempered Glass

Hisense's WR series have heat treated tempered glass preventing any damage to the touch panels.



##### Anti-Glare

Optical technology diffuses mirror-like reflections and bright lights to help keep what's on your screen clear and visible.



## Specifications

### Interactive Display Panel

LCD Size	75"
Backlight Type	D-LED
Resolution	3840x2160(pixels)
Brightness	350cd/m <sup>2</sup> (typ.)
Contrast Ratio	1200:1(typ.)
Response Time	8ms (typ.)
Refreshing Frequency	60Hz
Viewing Angle	178°(H) / 178°(V)
Life Time	50,000 hrs (min.)
Color Gamut(X% NTSC)	72%
Display Colors	1.07B(10bit)

### System

OS	Android 8.0
Language	Chinese/English/German/French/Italian /Spanish/Thai/Indonesian
RAM	3GB
ROM	32GB

### Speaker

Audio Output Power	2x15W/8Ω
--------------------	----------

### Connectivity

Input	HDMI IN x 2 DP IN x 1 VGA IN x 1 OPS(optional) x1 LAN x 1 USB x 4 Touch x 1 PC-Audio IN x 1 RS232 IN x 1
Output	HDMI OUT x 1 S/PDIF OUT x 1

### Power

Power Requirements	AC 100 V ~ 240 V, 50/60 Hz
Power Consumption Without OPS	240W

### Touch

Sensing Type	Infrared Touch Frame
Surface Protection	4mm Anti-Glare Glass
Infrared Touch	≤20 points
Touch Accuracy	90%(±1mm)
Response Time	≤8ms
Minimum Touch Object	≥2mm

### Certification

Standard Certification CB,CE,ICASA,ERP  
EAN 6942147457115



### Physical

Housing Color	Black
Product Size (W x H x D)	1720 x 1048 x 105mm 67.7 x 41.3 x 4.1 inch
Package Size (W x H x D)	1885 x 1218 x 300mm 74.6 x 48.5 x 12.2 inch
Net Weight	52kg / 114.66lbs
Packed Weight	68kg / 149.94lbs
VESA	600x400mm, 4-M8 screw

### Optional

Basic	Mobile Cart OPS
-------	--------------------

### What's in the box

Basic	User manual Pen x 2 Remote Control Hanging Wheel x 4 Wireless Cast Power Cable Battery x 2 Wall Mount Bracket
-------	--

### Dimensions

**75"** 1720 x 1048 x 105mm / 67.7 x 41.3 x 4.1 inch  
52 kg / 114.66lbs

