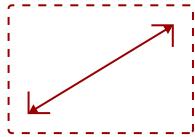


CDE6512-E1 - 65" DISPLAY, 3840 X 2160 RESOLUTION, 290 CD/M2 BRIGHTNESS, 16/7 OPERATION RATING, WALL MOUNT INCLUDED

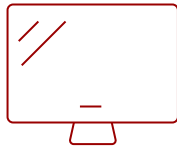
## Key Features

---

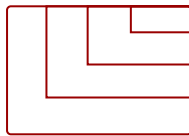
- All-in-one solution includes CDE6512 display and wall mount
- Powerful ViewSonic Embedded Signage Platform (VESP)
- Integrated RJ45 and USB Wi-Fi
- ViewBoard Cast content sharing software
- myViewBoard Display app for remote screen sharing



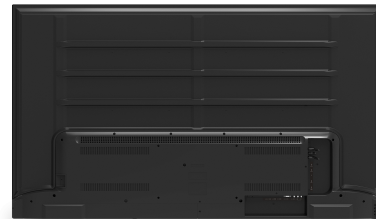
65  
DISPLAY



PANEL



RESOLUTION



## Product Description

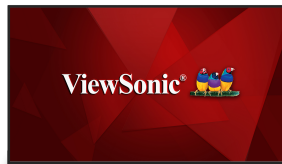
---

The ViewSonic® CDE6512 is a 65" 4K Ultra HD large format wireless presentation display. With features including a razor-sharp resolution of 3840 x 2160, 290-nit high brightness, 178-degree ultra-wide viewing angles, 2 x 10W speakers, and wireless screen sharing, the CDE6512 transforms meeting rooms into a dynamic communications hub. The built-in ViewBoard® Cast screen sharing software\* (along with the optional ViewSonic vCastSender app), and myViewBoard Display software, enables both on-site and online users to participate in conferences and simultaneously share content. Equipped with a 1.5GHz Quad-core embedded SoC processor, 2GB RAM, and 16GB of internal memory, the CDE6512 can play multimedia from internal storage or a USB flash drive 16 hours a day, seven days a week. And with remote configuration and content management system support, the ViewSonic® CDE6512 is also suitable for a wide array of diverse signage applications. Bundle includes CDE6512 and wall mount.

# Specifications

More Information	
Internal Speakers	10W (x2)
Voltage	100-240 VAC +/- 10% Wide Range, 50-60Hz +/-3 Hz
Consumption (max)	300W
Consumption (typical)	220W
Stand-by	<0.5W
On Screen Display	Picture, Screen, Audio, Time, Advanced Options, About
Temperature	32-104º F (0 - 40º C)
Humidity (non-condensing)	20-80%
Operating System	Android 11.0
CPU	Quad-core, 1.5GHz, MT9632/ARM Cortex-A53
GPU	Dual Core, G52MP2
Memory	2GB DDR4
Storage	16GB (eMMC)
Media Player Type	Yes
Screen Size	65
Viewable Area (in.)	64.5
Colors	1.07B
Light Source	DLED
Display Resolution	3840 x 2160
Aspect Ratio	16:9
Static Contrast Ratio	1,200:1
Viewing Angles	178º horizontal, 178º vertical
Dynamic Contrast Ratio	5,000:1
Backlight Life (Hours)	30,000
Response Time (Typical GTG)	8ms
Brightness	290 cd/m2
Panel Surface	Hard Coat - Anti-Glare, 2% Haze, 3H with anti-glare treatment
Operation Rating	16/7
Gross (kg)	26.8
Net (kg)	20.3
Net (lbs)	44.8
Gross (lbs)	59.1
RCA Audio In	1

<b>SPDIF Audio Out</b>	1
<b>USB 2.0</b>	2
<b>USB-C (15W PD)</b>	1
<b>RS232 In</b>	1
<b>HDMI 2.0 In</b>	2
<b>VGA</b>	1
<b>Wi-Fi/Bluetooth Slot</b>	1
<b>Ethernet LAN (RJ45)</b>	1
<b>3.5mm Audio Out</b>	1
<b>Packaging (mm)</b>	1585 x 947 x 180
<b>Physical (mm)</b>	1461.4 x 843.2 x 80.4
<b>Packaging (in.)</b>	62.4 x 37.28 x 7.09
<b>Physical (in.)</b>	57.54 x 33.2 x 3.17
<b>VESA Compatible</b>	300 x 200 mm
<b>Regulations</b>	cTUVus, FCC, Energy Star, EPEAT (Bronze), RoHS
<b>Package Contents</b>	CDE6512, Remote control with batteries, Wi-Fi adapter and Wall Mount, Quick Start Guide, Power cable, HDMI Cable, Wall Mount, Screws and RS232 adapter
<b>Recycle/Disposal</b>	Please dispose of in accordance with local, state or federal laws.
<b>Warranty</b>	Three-year limited warranty on parts, labor and backlight
<b>Notices</b>	AMX, Crestron, and Extron Compatible



## Contact Sales

[ViewSonic.com](https://www.viewsonic.com)

888.881.8781

email:

[salesinfo@viewsonic.com](mailto:salesinfo@viewsonic.com)